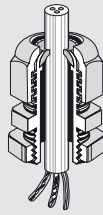
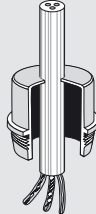


Cable entries:



**Cable glands ASM/AKM/ASS**

with strain relief and counter nut, degree of protection IP 65.

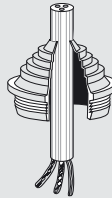


**Grommets ESM**

Degree of protection IP 55

Grommets ESM are inserted into knock outs.

No nut is necessary!

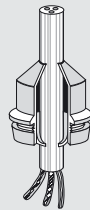


**Stepped grommets STM**

Degree of protection IP 55

Stepped glands STM are inserted into knock outs.

No nut is necessary!

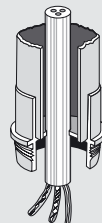


**Grommets EDK**

Degree of protection IP 65

Grommets EDK are inserted into knock outs.

No nut is necessary!

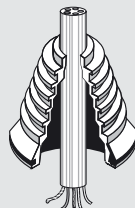


**Grommets for conduits EDR**

Degree of protection IP 65

Grommets for conduits EDR are inserted into knock outs.

No nut is necessary!

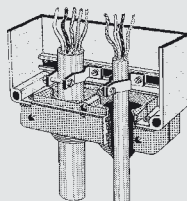


**Stepped grommet KST 70**

Degree of protection IP 65

Stepped grommets KST 70 are inserted into knockouts.

No nut is necessary!

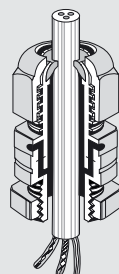


**Cable insertion unit**

After detaching the upper box fin the cable insertion unit can be fixed to any 300 mm box wall.

The cable is to be inserted in the box from the front.

Degree of protection IP 54 with additional strain and cable retention (e.g. Mi ZE 62). The assembly instructions must be observed!



**Combi climate glands KBM / KBS**

with strain relief and counter nut, degree of protection IP 65.

Cable gland and pressure compensation in one with integrated membrane.