

**Outside diameter of conventional cable cross-sections**  
**Short forms of cables**
**Outside diameter of conventional cable cross-sections**

The outside diameters are average values of different products.

Cable cross-section mm <sup>2</sup>	NYM mm Ø	NYY mm Ø	NYCY NYCWY mm Ø	Cable cross-section mm <sup>2</sup>	NYM mm Ø	NYY mm Ø	NYCY NYCWY mm Ø
1x4	8	9	—	4x1.5	11	13.5	14
1x6	8.5	10	—	4x2.5	12.5	14.5	15
1x10	9.5	10.5	—	4x4	14.5	17.5	17
1x16	11	12	—	4x6	16.5	18	18
1x25	—	14	—	4x10	18.5	20	20
1x35	—	15	—	4x16	23.5	23	23
1x50	—	16.5	—	4x25	28.5	28	28
1x70	—	18	—	4x35	32	26-30	29
1x95	—	20	—	4x50	—	30-35	34
1x120	—	21	—	4x70	—	34-40	37
1x150	—	23	—	4x95	—	38-45	42
1x185	—	25	—	4x120	—	42-50	47
1x240	—	28	—	4x150	—	46-53	52
1x300	—	30	—	4x185	—	53-60	60
2x1.5	10	12	—	4x240	—	59-71	70
2x2.5	11	13	—	4x25/16	—	—	30
2x4	—	15	—	4x35/16	—	—	30
2x6	—	16	—	4x50/25	—	—	34-37
2x10	—	18	—	4x70/35	—	—	40
2x16	—	20	—	4x95/50	—	—	44.5
2x25	—	—	—	4x120/70	—	—	48.5
2x35	—	—	—	4x150/70	—	—	53
3x1.5	10.5	12.5	13	4x185/95	—	—	—
3x2.5	11	13	14	4x240/120	—	—	—
3x4	13	16	16	5x1.5	12	15	15
3x6	15	17	17	5x2.5	13.5	16	17
3x10	18	19	18	5x4	15.5	16.5	18
3x16	20	21	21	5x6	18	19	20
3x25	—	26	—	5x10	20	21	—
3x35	—	—	—	5x16	26	24	—
3x50	—	—	—	5x25	31.5	—	—
3x70	—	—	—	7x1.5	13	16	—
3x95	—	—	—	7x2.5	14.5	16.5	—
3x120	—	—	—	19x1.5	—	22	—
3x150	—	—	—	24x1.5	—	25	—
3x185	—	—	—				
3x240	—	—	—				
3x25/16	—	27	27				
3x35/16	—	28	27				
3x50/25	—	32	32				
3x70/35	—	32-36	36				
3x95/50	—	37-41	40				
3x120/70	—	42	43				
3x150/70	—	46	47				
3x185/95	—	52	48-54				
3x240/120	—	57-63	60				
3x300/150	—	63-69	—				

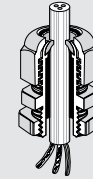
**Short forms of cables**

- NYM Light plastic-sheathed cable
- NYY Plastic-sheathed cable
- NYCY Plastic-sheathed cable with concentric conductor
- NYCWY Plastic-sheathed cable with concentric, undulated conductor

## Assignment of cable outside diameters to cable glands Standards

### Assignment of cable outside diameters to cable glands

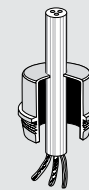
Outside diameter of cables		Cable entry metric
min. mm Ø	max. mm Ø	
3	6.5	ASM/AKM/ASS 12
5	10	ASM/AKM/ASS 16
6.5	13.5	ASM/AKM/ASS 20
10	17	ASM/AKM/ASS 25
14	21	ASM/AKM/ASS 32
20	28	ASM/AKM/ASS 40
25	35	ASM/AKM/ASS 50
35	48	ASM/AKM/ASS 63
5.5	13	AXM 20
8	17	AXM 25
12	21	AXM 32
17	28	AXM 40



#### Cable glands ASM/AKM/ASS

Degree of protection: up to IP 67  
With strain relief and counternut.

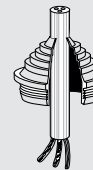
Outside diameter of cables		Cable entry metric
min. mm Ø	max. mm Ø	
4.8	11	ESM 16
6	13	ESM 20
9	17	ESM 25
9	23	ESM 32
17	30	ESM 40



#### Grommets ESM

Degree of protection: IP 55  
Grommets are inserted into knock outs.  
No nut is necessary!

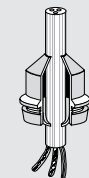
Outside diameter of cables		Cable entry metric
min. mm Ø	max. mm Ø	
3.5	12	STM 16
5	16	STM 20
5	21	STM 25
13	26.5	STM 32
13	34	STM 40



#### Stepped grommets STM

Degree of protection: IP 55  
Stepped grommets are inserted into knock outs.  
No nut is necessary!

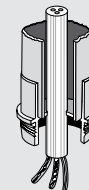
Outside diameter of cables		Cable entry metric
min. mm Ø	max. mm Ø	
5	10	EDK 16
6	13	EDK 20
9	17	EDK 25
8	23	EDK 32
11	30	EDK 40



#### Grommets EDK

Degree of protection: IP 65  
Grommets are inserted into knock outs.  
No nut is necessary!

Outside diameter of cables		Cable entry metric
min. mm Ø	max. mm Ø	
<b>Conduit</b>		
M 16		EDR 16
M 20		EDR 20
M 25		EDR 25
M 32		EDR 32
M 40		EDR 40



#### Grommets for conduits EDR

Degree of protection: IP 65  
Grommets for conduits are inserted into knock outs.  
No nut is necessary!

Hensel cable entries comply with the following standards and regulations

- EN 50 262  
Metric cable entries for electrical installations
- EN 60 423  
Conduits for electrical purposes - Outside diameter of conduits for electrical installations and threads for conduits and fittings
- IEC 60 529  
Degrees of protection provided by enclosures (IP-Code)