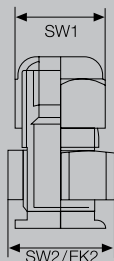
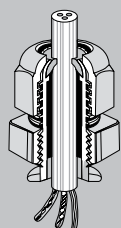
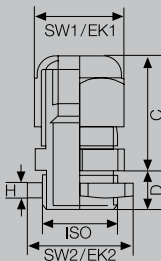
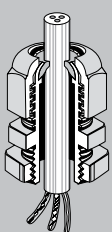
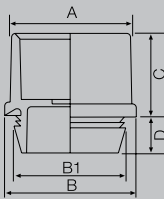
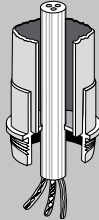
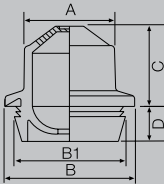
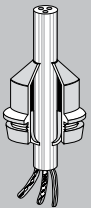
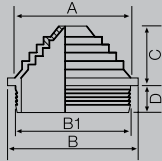
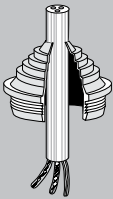
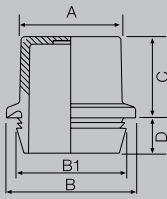
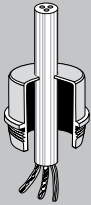


### Dimensions



#### Grommets

in mm	A	B	B1	C	D
ESM 16	16.5	22	18.5	14.5	8.5
ESM 20	20.5	26	22.5	14.5	8.5
ESM 25	26.0	31	27.5	14.5	8.5
ESM 32	33.0	38	34.5	17.5	8.5
ESM 40	41.0	46	42.5	17.5	8.5

#### Grommets ESM

Degree of protection IP 55  
Grommets ESM are inserted into knockouts.

#### Stepped grommet

in mm	A	B	B1	C	D
STM 16	13.2	21.2	19	7.4	8.0
STM 20	18.0	25	23	9.2	8.0
STM 25	21.6	30	28	11.5	7.4
STM 32	27.6	37	35	11.5	8.6
STM 40	33.6	45	43	15.1	8.6

#### Stepped grommets STM

Degree of protection IP 55  
Stepped glands STM are inserted into knockouts.

#### Grommets

in mm	A	B	B1	C	D
EDK 16	14.5	22	18.5	13.5	8.5
EDK 20	18.5	26	22.5	14.5	8.5
EDK 25	23.5	31	27.5	14.5	8.5
EDK 32	30.5	38	34.5	19.5	8.5
EDK 40	38.5	46	42.5	19.5	8.5

#### Grommets EDK

Degree of protection IP 65  
Grommets EDK are inserted into knockouts.

#### Grommets for conduits

in mm	A	B	B1	C	D
EDR 16	20	22	18.5	14.5	8.5
EDR 20	24	26	22.5	14.5	8.5
EDR 25	29	31	27.5	14.5	8.5
EDR 32	36	38	34.5	17.5	8.5
EDR 40	44	46	42.5	17.5	8.5

#### Grommets for conduits EDR

Degree of protection IP 65  
Grommets for conduits EDR are inserted into knockouts.

#### Cable glands ASM/AKM/ASS

with strain relief and counternut, degree of protection IP 65.

#### Threaded cable glands

in mm	ISO	SW1	EK1	C	D	SW2	EK2	H
		across flats	across corners Ø	max.	across flats	across corners Ø		
ASM/AKM/ASS 12	M 12	15	16.4	22	8	17	19.0	5
ASM/AKM/ASS 16	M 16	20	22.0	26	8	22	24.7	5
ASM/AKM/ASS 20	M 20	24	26.5	29	8	27	30.2	6
ASM/AKM/ASS 25	M 25	29	32.0	34	8	32	36.0	6
ASM/AKM/ASS 32	M 32	36	39.7	39	10	41	46.0	7
ASM/AKM/ASS 40	M 40	46	50.5	46	10	50	54.1	7
ASM/AKM/ASS 50	M 50	55	60.0	51	10	60	66.3	8
ASM/AKM/ASS 63	M 63	68	74.7	55	10	75	83.0	8

#### Cable glands AFM

with strain relief

in mm	SW1	SW2	EK2
	across flats	across flats	across corners Ø
AFM 16	20	24	26.5
AFM 20	24	26	29.0
AFM 25	29	32	36.0
AFM 32	36	42	46.0